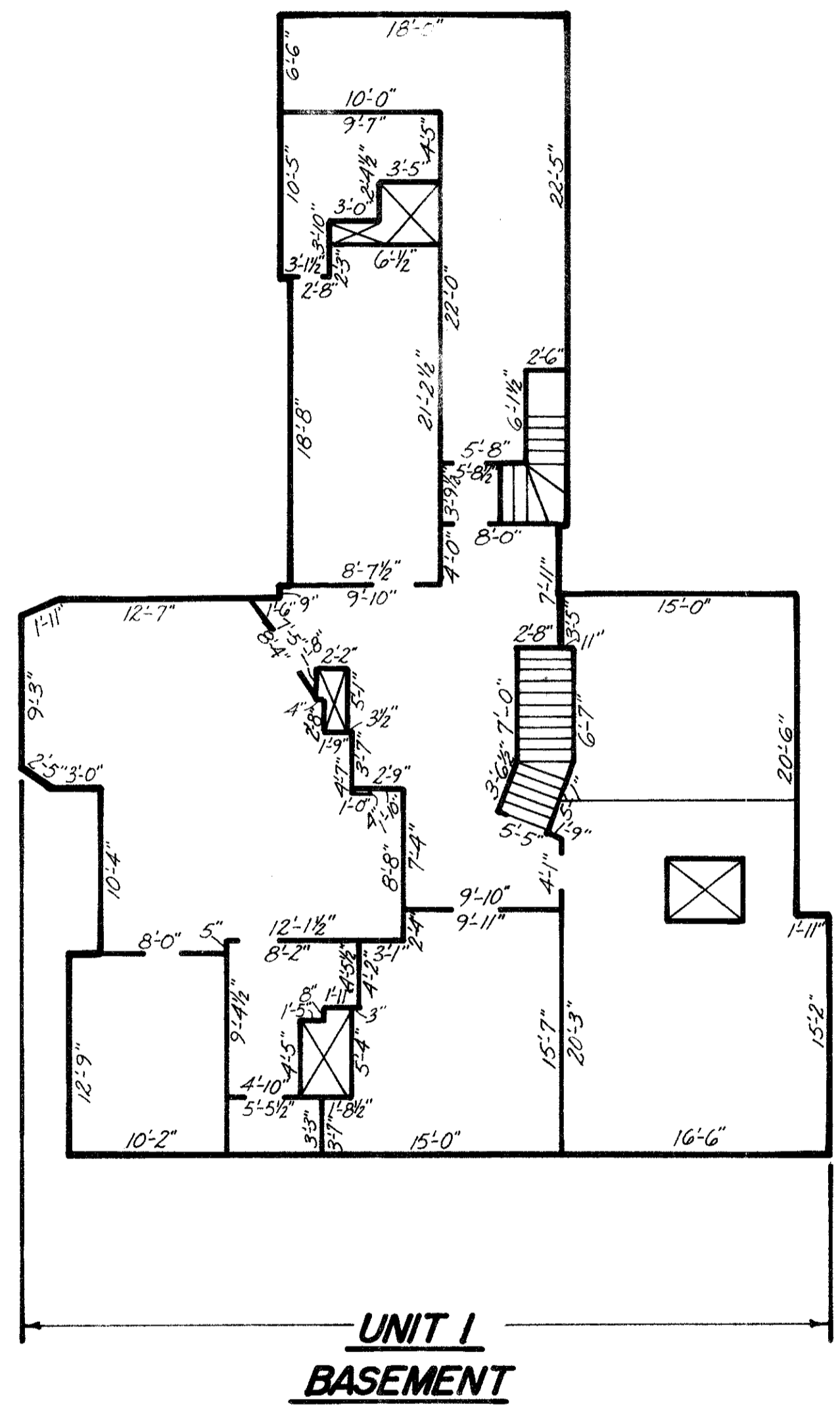


I CERTIFY THAT I HAVE CONFORMED WITH THE RULES AND REGULATIONS OF THE REGISTERS OF DEEDS IN PREPARING THIS PLAN.

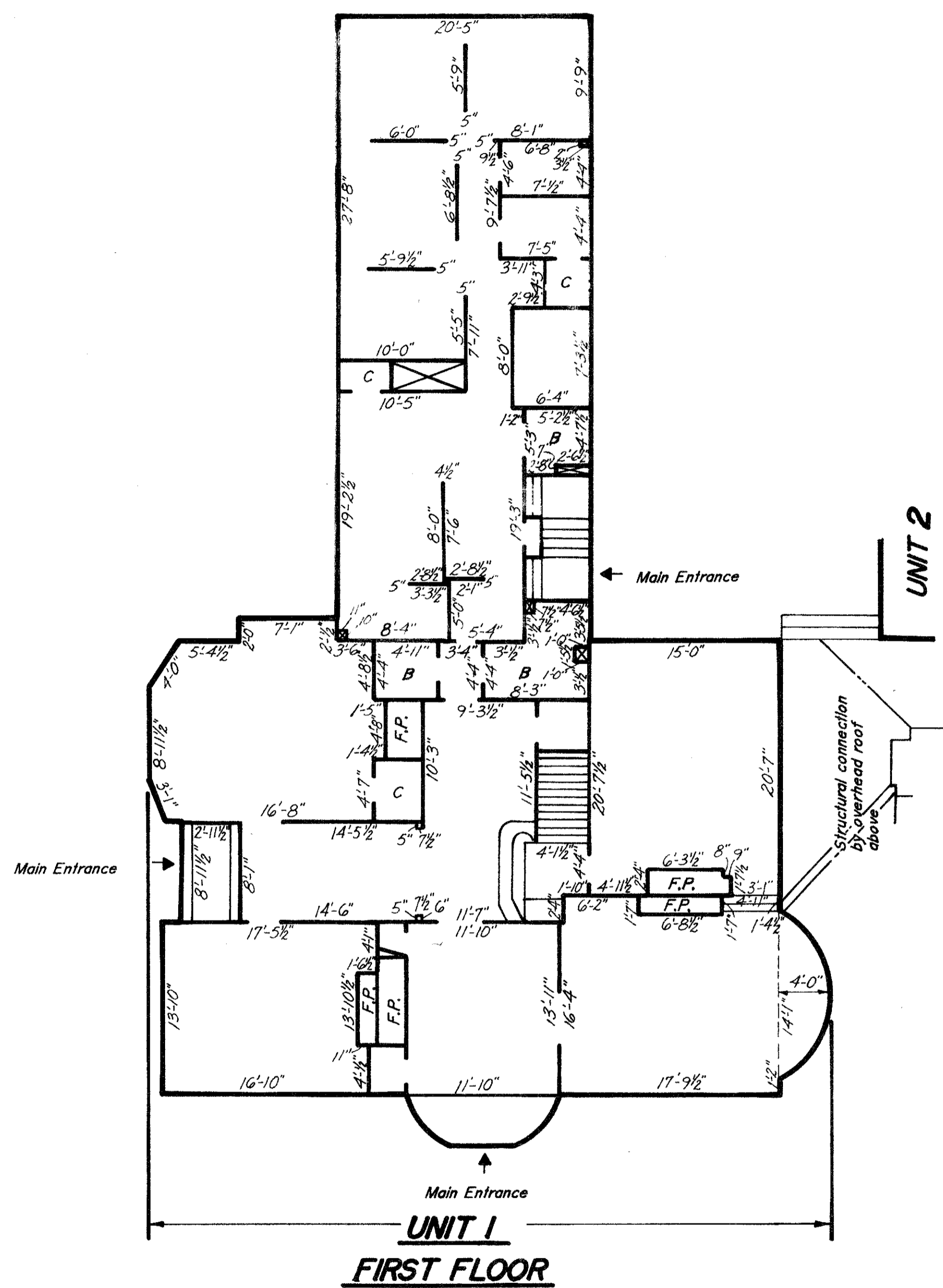
John E. Levreault P.L.S.
DATE: 1/25/89



FLOOR PLAN

I, JOHN E. LEVREULT, REGISTERED PROFESSIONAL LAND SURVEYOR IN THE COMMONWEALTH OF MASSACHUSETTS DO HEREBY CERTIFY THAT THESE PLANS FULLY AND ACCURATELY DEPICT THE LAYOUT, LOCATION, NUMBERS AND THE DIMENSIONS OF THE UNITS AS-BUILT.

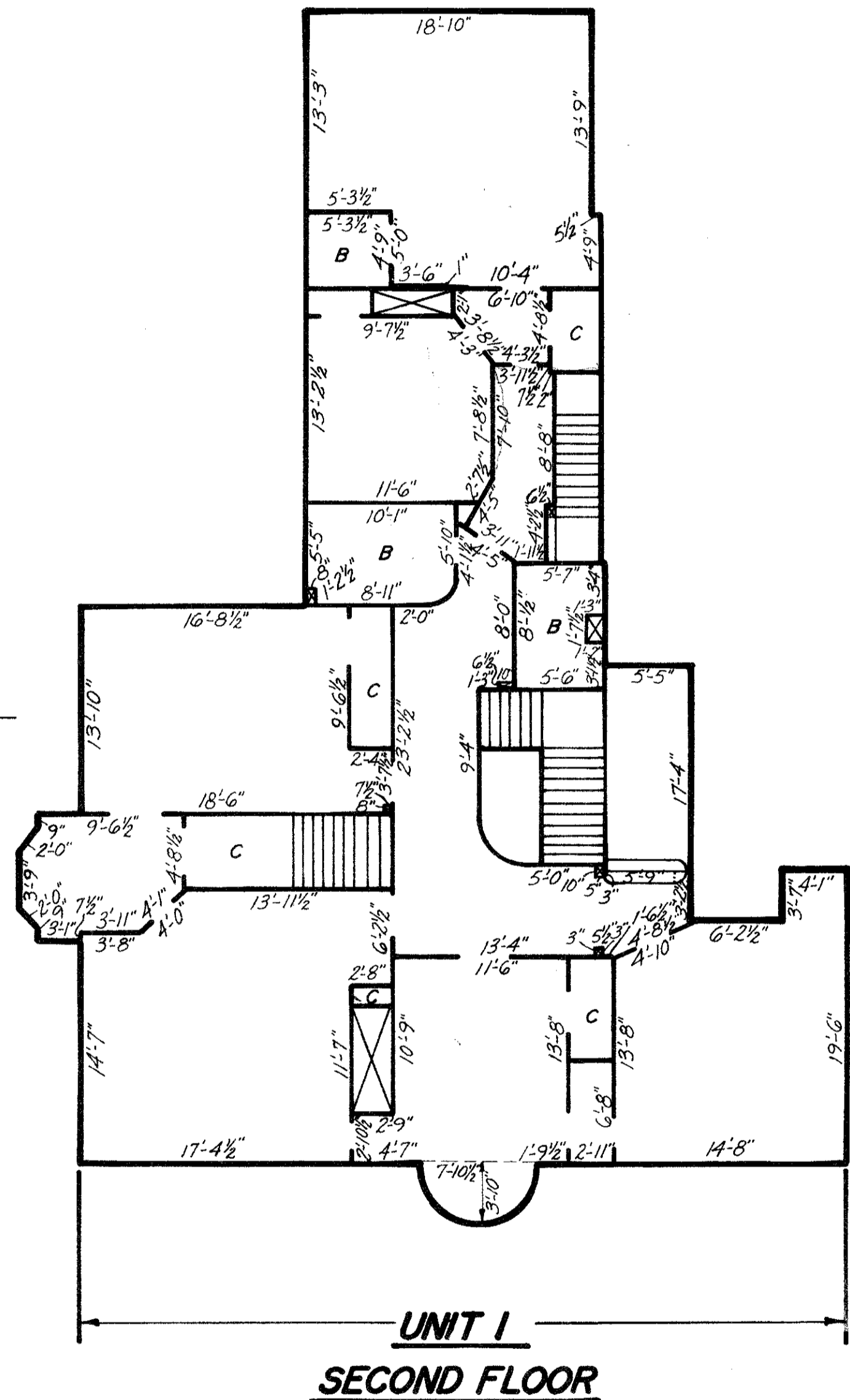
John E. Levreault P.L.S.
DATE: 1/25/89



UNIT DEED CERTIFICATION

I, JOHN E. LEVREULT, REGISTERED PROFESSIONAL LAND SURVEYOR IN THE COMMONWEALTH OF MASSACHUSETTS DO HEREBY CERTIFY THAT THIS PLAN SHOWS THE UNIT DESIGNATION OF UNIT BEING CONVEYED AND OF THE IMMEDIATE ADJOINING UNIT, AND THAT IT FULLY DEPICTS THE LAYOUT OF THE UNIT, ITS LOCATION, DIMENSIONS, APPROXIMATE AREA, MAIN ENTRANCE AND IMMEDIATE COMMON AREA TO WHICH IT HAS ACCESS AS-BUILT.

P.L.S.
DATE: _____



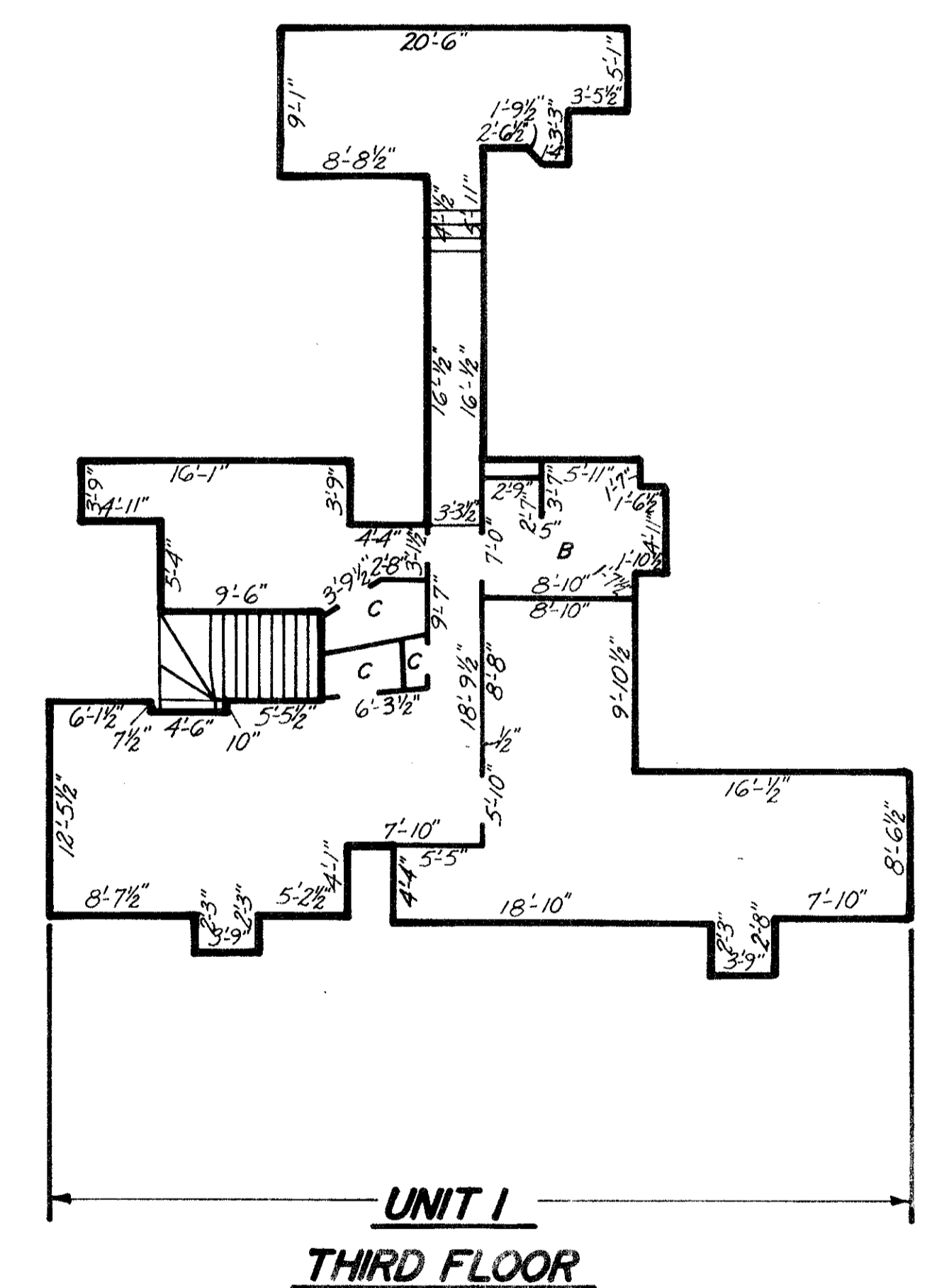
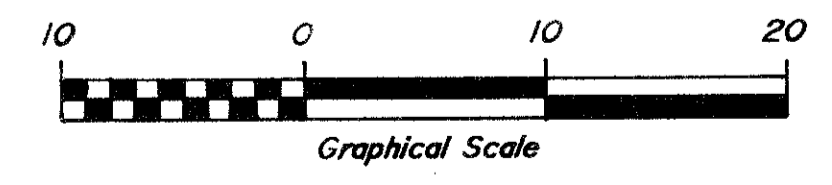
LEGEND

C = CLOSET
B = BATH
F.P. = FIRE PLACE

Note: Measurements from unfinished surface of interior walls

APPROXIMATE NET FLOOR AREA

UNIT 1 = 9,046 S.F.



LEVREULT ENGINEERING

102 S. FRANKLIN STREET - HOLBROOK, MASS. 02343
TEL: (617) 767-0933

FLOOR PLAN

**"THE MANSION"
UNIT 1 BELCHER HOUSE CONDOMINIUM
RANDOLPH, MASS.**

SCALE: 1/8" = 1'-0"

DATE: JANUARY 25, 1989

REVISIONS

DATE	BY	DESCRIPTION

SHEET 1 OF 2

FILE NO. 89 - 7